



**TECK 403 SERIES SADDLE NOW AVAILABLE AS A TWO PIECE VERSION
FOR SIZES 6-12" DIAMETER**

8803 Two Piece Stainless-Steel Saddle

Stainless Steel TECK™ service saddles feature a fully welded bar, chemically passivated welds, anti-gall nuts, EPDM ring gasket, and AWWA, FNPT and BSPT taps. Multiple sizes are available including standard and custom diameter ranges. Installation instructions are provided with each saddle. Please read and follow instructions to ensure long lasting performance.

Benefits

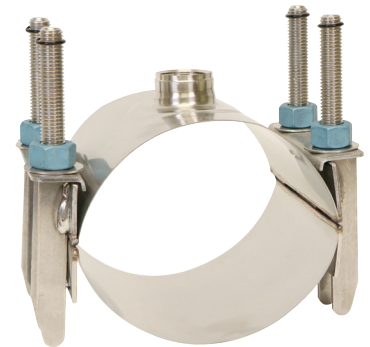
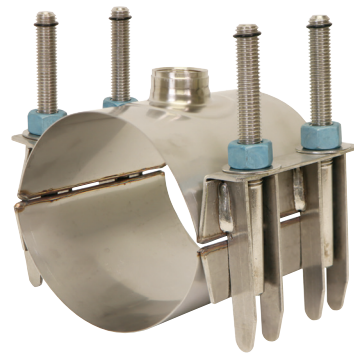
- All components are made of 18-8 type 304 Stainless Steel
- Fully Passivated for corrosion resistance
- Lifter bar design - no loose parts for assembly
- Saddle size and outlet information clearly marked on each saddle
- Rated for 250 PSI working pressure
- Alternative gasket materials NBR, is available upon request
- Ring gasket and pad gasket options are available upon request
- Recommended bolt torque ~ 60 ft. lbs.

Materials

- Band - ASTM A240 type 304 (18-8) stainless steel
- Lifter Plate - ASTM A240 Type 304 (18-8) stainless steel
- Gasket - EPDM ring gasket meets ASTM D2000 and NSF 61
- Studs - ASTM F593 Type 304 (18-8) stainless steel
- Nuts - ASTM F594 Type 304 (18-8) stainless steel PTFE coated to prevent galling
- Washers - ASME B18.221 Type 304 (18-8) stainless steel

Notes

- Order saddles by model numbers for example 8803-0690-A3
- All saddles have Pipe O.D. size identification
- All saddles meet AWWA standards and are certified to NSF 61
- Belleville washer kits (for HDPE pipe) available
- Laser etched Label for part number, description, brief instruction and manufacturing date



| Part Number | | | Nom | Pipe OD Range | |
|-------------|------|--------------------|-----|---------------|------|
| Series | Size | Outlet AWWA or FIP | | Min | Max |
| 8803 | 677 | A3 or F3 | 6" | 6.37 | 7.17 |
| 8803 | 677 | A4 or F4 | 6" | 6.37 | 7.17 |
| 8803 | 677 | A5 or F5 | 6" | 6.37 | 7.17 |
| 8803 | 677 | A6 or F6 | 6" | 6.37 | 7.17 |
| 8803 | 677 | A7 or F7 | 6" | 6.37 | 7.17 |

| Part Number | | | Nom | Pipe OD Range | |
|-------------|------|--------------------|-----|---------------|------|
| Series | Size | Outlet AWWA or FIP | | Min | Max |
| 8803 | 886 | A3 or F3 | 8" | 8.46 | 9.26 |
| 8803 | 886 | A4 or F4 | 8" | 8.46 | 9.26 |
| 8803 | 886 | A5 or F5 | 8" | 8.46 | 9.26 |
| 8803 | 886 | A6 or F6 | 8" | 8.46 | 9.26 |
| 8803 | 886 | A7 or F7 | 8" | 8.46 | 9.26 |

| Part Number | | | Nom | Pipe OD Range | |
|-------------|------|--------------------|-----|---------------|-------|
| Series | Size | Outlet AWWA or FIP | | Min | Max |
| 8803 | 1093 | A3 or F3 | 10" | 10.53 | 11.33 |
| 8803 | 1093 | A4 or F4 | 10" | 10.53 | 11.33 |
| 8803 | 1093 | A5 or F5 | 10" | 10.53 | 11.33 |
| 8803 | 1093 | A6 or F6 | 10" | 10.53 | 11.33 |
| 8803 | 1093 | A7 or F7 | 10" | 10.53 | 11.33 |

| Part Number | | | Nom | Pipe OD Range | |
|-------------|------|--------------------|-----|---------------|-------|
| Series | Size | Outlet AWWA or FIP | | Min | Max |
| 8803 | 1298 | A3 or F3 | 12" | 12.58 | 13.38 |
| 8803 | 1298 | A4 or F4 | 12" | 12.58 | 13.38 |
| 8803 | 1298 | A5 or F5 | 12" | 12.58 | 13.38 |
| 8803 | 1298 | A6 or F6 | 12" | 12.58 | 13.38 |
| 8803 | 1298 | A7 or F7 | 12" | 12.58 | 13.38 |